

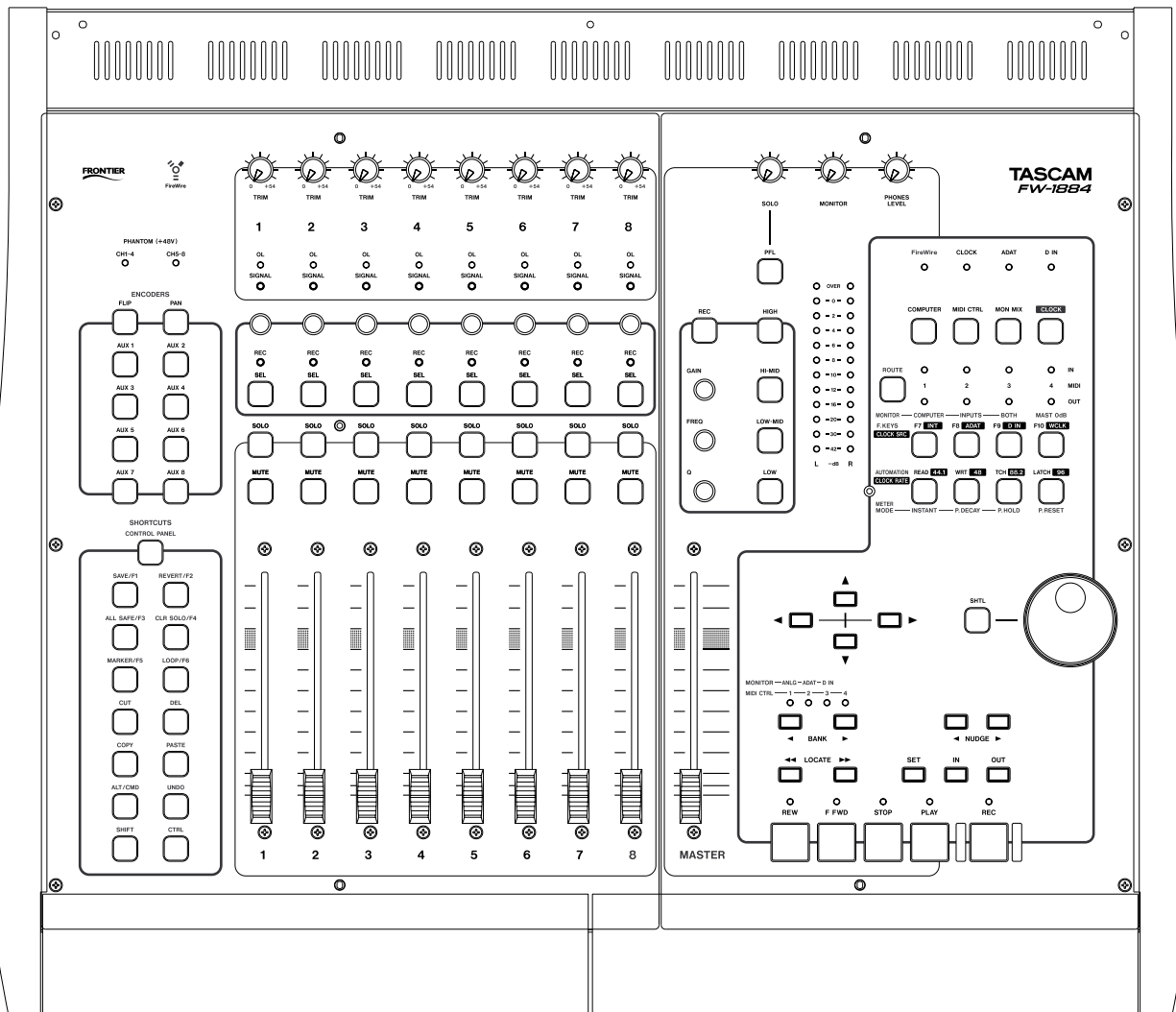
# TASCAM

TEAC Professional Division

## FRONTIER DESIGN GROUP

# FW-1884

## Professional Control Surface / FireWire Audio-MIDI Interface



**DIGITAL PERFORMER (Macintosh) NOTES**

# Table of Contents

Standard Functionality.....	3	Recording .....	8
Programmable Keys .....	3	To Record .....	8
Virtual Mac Keyboard Keys .....	3	Disarm Track Record. ....	8
To Set Up the FW-1884 for use with Digital Performer .....	3	To Set Punch In/Out from current Selection ..	8
To Toggle AutoPunch Mode.....	3	To Toggle AutoPunch Mode.....	8
To Perform Record Automation .....	3	To Perform Record Automation .....	8
To Change Automation Touch Mode .....	3	To Change Automation Touch Mode .....	8
To Change Automation Latch and Overwrite Mode.....	3	To Change Automation Latch and Overwrite Mode.....	8
To Disable Track Automation.....	3	To Disable Track Automation.....	9
Accessing Channels .....	4	Navigating within DP .....	9
Changing the number of visible DP mixer channels .....	4	Controlling DP Windows .....	9
Shifting the FW-1884 Controls to the Next or Previous Bank of 8 Channels .....	4	Opening/Closing the FW-1884 Control Panel	9
Shifting the FW-1884 Controls to the Next or Previous Channel.....	4	Virtual Key Mappings .....	9
Jumping directly to a bank of eight channels	5	Mixing.....	9
Changing the Master Fader Assignment .....	5	Controlling Master Volume .....	9
Playback .....	6	To Change the Master Fader Assignment ....	10
To Play and Stop.....	6	To Control Track Volume .....	10
To Toggle the Audible Mode On/Off.....	6	To Control Track Pan.....	10
To Rewind or Fast Forward.....	6	To Flip Fader and Encoder Control.....	10
To Slow Rewind or Fast Forward .....	6	Aux Busses .....	10
To Jump to the Beginning.....	6	To Control Aux Send Level on a Track.....	10
To Jump to the End .....	6	To Mute Aux Send on a Track .....	10
To Scrub Forward or Back .....	6	Effects .....	11
To Shuttle Forward or Back .....	7	To Configure the Four Band EQ .....	11
To Set a New Marker.....	7	To adjust other Effect Inserts .....	11
To Set Memory Cycle In and Out Times.....	7	To Bypass an Effect .....	11
Toggle Memory Cycle On/Off.....	7	FW-1884 Control Listings .....	12
To Nudge the selection .....	7	Modifier Keys .....	12
To Solo or Unsolo a Track .....	7	Surface Keys and Knobs .....	12
To Un-solo All Tracks in a Project.....	7		
To Mute or Unmute a Track.....	7		
To Unmute All Tracks in a Project .....	7		

The TASCAM FW-1884 control surface plug-in enables control of the most common functions within Digital Performer. By default the surface is setup to easily play, record, and control automation functions. Extended key modifiers and re-mappable function keys make it easy to access a wide variety of additional Digital Performer features.

## Standard Functionality

The FW-1884 keys, faders, and encoders provide access to the most commonly used Digital Performer functions. Used with surface modifier keys (**SHIFT**, **CTRL**, etc.) these controls are extended to encompass additional functions.

## Programmable Keys

**AUX 5** through **AUX 8** and the cursor keys can be configured to control additional Digital Performer features. For example the **AUX 7** key is mapped to Digital Performer's virtual **Return** key by default, useful for

### NOTE

Throughout this document, Digital Performer is referred to as "DP".

Also note there are three versions of the DP plugin. One version each for DP 2.7 & 3.0, 3.1 and 4.x.

pressing "Return" to accept dialog screens. Using DP's Remote Controls this key can be programmed to perform other functions when combined with the modifier keys.

## Virtual Mac Keyboard Keys

**SHIFT**, **CTRL**, and **COMMAND** are sent to Digital Performer as Macintosh virtual keyboard keys. Other virtual keys include the cursor keys, and programmable virtual keys (**Return**, **Esc**, **Page Up**, **Page Down**).

## To Set Up the FW-1884 for use with Digital Performer

### NOTE

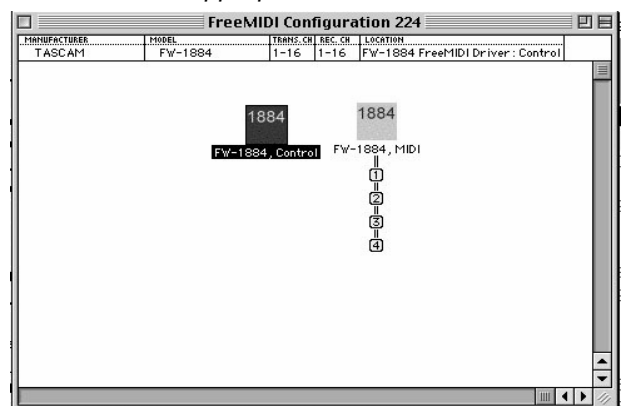
These notes apply to pre-OS X installations only.

- 1 Follow the procedures for installing the FW-1884 for use with your computer, as described in the *FW-1884 Users' Manual*, and select **COMPUTER** control mode.
- 2 Refer to the documentation within each individual plug-in's folder for installation instructions.
- 3 Make sure the FW-1884's FreeMIDI or OMS drivers are installed in their respective folders within your system folder. Do not install them into the OMS or FreeMIDI folders within the DP folder, or the FW-1884 will not function correctly.
- 4 Launch DP and open or create a new project file.
- 5 Once your project is open, select **Edit FreeMIDI Configuration** from the **Basics** pull-down menu. Use the **Quick Setup** or **Update Interfaces** option under the

Configuration menu to add the FW-1884 Control and MIDI icons to your setup. If you are using OMS, follow the same procedure to configure your OMS Setup.

### NOTE

If the FW-1884 does not appear in your configuration, make sure the FW-1884 FreeMIDI or OMS drivers are installed in their appropriate folders.



# Digital Performer (Macintosh): Accessing Channels

- 6 Select **Control Surface Setup** from the **Basics pull-down menu**. Set **Hardware** to **FW-1884** and **MIDI Communications** to **FW-1884, Control-16**.

- 7 Select **Audio System** from the **Basics pull-down menu**. Set **audio system type** to **MOTU Audio System**.

## Accessing Channels

The FW-1884 provides access to eight channels and one master output track at a time. The **◀BANK** and **BANK▶** keys are used to shift which DP tracks/channels the FW-1884 is controlling and how many are vis-

ible. In order to keep DP and the FW-1884 in sync you should use the FW-1884 controls to set the number of visible channels, including the first time you open or create a project.

## Changing the number of visible DP mixer channels

- 1 Hold **CTRL** and press the **BANK▶** key to increase the number of channels shown, by eight channels. Hold **SHIFT** and **CTRL** and press the **BANK▶** key to increase the number of channels shown, by one.
- 2 Hold **CTRL** and press the **◀BANK** key to decrease the number of channels shown, by eight channels. Hold **SHIFT** and **CTRL** and press the **◀BANK** key to decrease the number of channels shown, by one.

## Shifting the FW-1884 Controls to the Next or Previous Bank of 8 Channels

- 1 Press the **BANK▶** key or the **◀BANK** key, to shift the FW-1884's controls to the next 8 or previous 8 channels, respectively.

The **BANK** indicators indicate the currently active bank, as shown here:

BANK indicators <sup>a</sup>	DP channels
☆●●●	1 — 8
●☆●●	9 — 16
●●☆●	17 — 24
●●●☆	25 — 32
●☆☆☆	33 — 40
☆●☆☆	41 — 48
☆☆☆●	49 — 56
☆☆☆☆●	57 — 64
●●●●	All other track ranges

a. ☆=indicator on, ●= indicator off

## Shifting the FW-1884 Controls to the Next or Previous Channel

- 1 Hold **SHIFT** and press the **BANK▶** or **◀BANK** key to shift to the next or previous channel, respectively.

## Jumping directly to a bank of eight channels

1 Hold **CTRL** and press one of the following keys:

**F7/INT** - jumps to Bank 1 (channels 1-8)

**F8/ADAT** - jumps to Bank 2 (channels 9-16)

**F9/SPDIF** - jumps to Bank 3 (channels 17-24)

**F10/WCLK** - jumps to Bank 4 (channels 25-32)

**READ** - jumps to Bank 5 (channels 33-40)

**WRITE** - jumps to Bank 6 (channels 41-48)

**TCH** - jumps to Bank 7 (channels 49-56)

**LATCH** - jumps to Bank 8 (channels 57-64)

## Changing the Master Fader Assignment

You can switch the master fader assignment to the next or previous virtual main by holding down **SHIFT** and **CTRL** while you press either the **BANK ►** or **◄BANK** key.

While **SHIFT** and **CTRL** are held down, the **BANK** indicators show which virtual Master the master fader is assigned to.

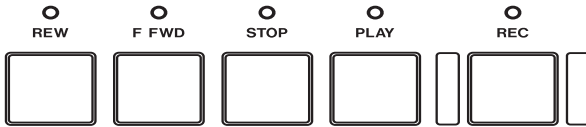
BANK indicators <sup>a</sup>	MASTER fader mapping
☆ ● ● ●	Master 1
● ☆ ● ●	Master 2
● ● ☆ ●	Master 3
● ● ● ☆	Master 4
● ☆ ☆ ☆ ☆	Master 5
☆ ● ☆ ☆ ☆	Master 6
☆ ☆ ● ☆ ☆	Master 7
☆ ☆ ☆ ●	Master 8
● ● ● ●	All other masters

a. ☆=indicator on, ●= indicator off

# Digital Performer (Macintosh): Playback

## Playback

The FW-1884 can control DP's playback, rewind, fast forward, markers, jog-shuttle, mute, solo, archive, and looping.



### To Play and Stop

- Press the **PLAY** key to play.
- Press the **STOP** key to stop.

### To Toggle the Audible Mode On/Off

- Hold down **SHIFT** and press **PLAY**.

### To Rewind or Fast Forward

- Press **REW** or **F FWD** to rewind or fast forward.

### To Slow Rewind or Fast Forward

- Hold down **SHIFT** and press **REW** or **F FWD** to rewind or fast forward at slow speed.

### To Jump to the Beginning

- Press the **LOCATE** key

or

- When stopped, press the **STOP** key again.

### To Jump to the End

- Press the **LOCATE** key.



### To Scrub Forward or Back

- With the **SHTL** key *off*, turn the data wheel clockwise to scrub forward, or counter-clockwise to scrub backward.

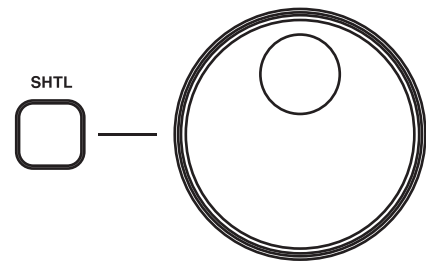
Holding **SHIFT** enables scrubbing at a slower rate.

---

## To Shuttle Forward or Back

- With the **SHTL** key *on*, turn the data wheel clockwise to shuttle forward, or counter-clockwise to shuttle backward.

Continue turning in a given direction to increase the shuttle speed.



---

## To Set a New Marker

- 1 Move the Now time to the place where you want to set a marker. *or*
- 2 Press the **MARKER/F5** key

Hold **SET** and press **◀◀LOCATE** or **LOCATE▶▶**.

---

## To Set Memory Cycle In and Out Times

- 1 Move the Now time to the desired start point.
- 2 Hold **SHIFT** and **SET** and press the **IN** key.
- 3 Move the Now time to the desired end point.
- 4 Hold **SHIFT** and **SET** and press the **OUT** key.

---

## Toggle Memory Cycle On/Off

- Hold **SHIFT** and press the **OUT** key.

---

## To Nudge the selection

- 1 Select an audio event.
- 2 Press the **◀NUDGE** or **NUDGE▶** key.

---

## To Solo or Unsolo a Track

- Press the **SOLO** key of the track you want to solo or unsolo.

---

## To Un-solo All Tracks in a Project

- Press the **CLR SOLO/F4** key

---

## To Mute or Unmute a Track

- Press the **MUTE** key of the track you want to mute or unmute.

---

## To Unmute All Tracks in a Project

- Hold **SHIFT** and press the **CLR SOLO/F4** key.

---

## Recording

---

The DP record functions that the FW-1884 can control are recording, punch recording, and automation recording.

---

### To Record

- 1 Arm a track by holding the **REC** key (above the EQ Encoders) and pressing the **SEL** key on the desired track.
- 2 Move the Now time to where you want to start recording.
- 3 Press the transport **RECO**rd key to start recording. Alternatively, you can use the footswitch.
- 4 Press the **STOP** key to stop recording, or click the footswitch again.

---

### Disarm Track Record.

- All armed tracks can be disarmed by pressing the **ALL SAFE/F3** key.

*or*

- by holding **SHIFT** and pressing the **REC** key.

---

### To Set Punch In/Out from current Selection

- 1 Move the Now time to the desired start point.
- 2 Hold **SET** and press the **IN** key.
- 3 Move the Now time to the desired end point.
- 4 Hold **SET** and press the **OUT** key.

---

### To Toggle AutoPunch Mode

- Hold **SHIFT** and press the **IN** key.

---

### To Perform Record Automation

- Hold the **WRT** key and press a track **SEL** key to arm that track for automation recording.  
Automation writing is determined by the Touch-Write function of DP while the transport is rolling.
- Press the **STOP** key to stop automation recording.  
Hold **SHIFT** and press **WRT** to disable all record automation tracks.

---

### To Change Automation Touch Mode

- 1 Arm the track for Write Automation.
  - 2 Hold **TCH** and press the track's **SEL** key.
- The track's on-screen automation mode will toggle between Touch and Trim Touch modes.

---

### To Change Automation Latch and Overwrite Mode

- 1 Arm the track for Write Automation.
  - 2 Hold **LATCH** and press the track's **SEL** key.
- The track's on-screen automation mode will toggle between the Latch, TrimLatch, and Overwrite mode.



---

## To Disable Track Automation

- Hold the **WRT** key and press the track **SEL** key to toggle Read Automation.
- Hold the **READ** key and press the track **SEL** key to turn off Automation.
- Hold the **READ** key and press the track **SEL** key twice.

or

---

## Navigating within DP

---

### Controlling DP Windows

Hold **SHIFT** and press one of the following keys to toggle a window from front to back. If that window isn't already open this action will open it.

**F7/INT** - Track window

**F8/ADAT** - Mixing window

**F9/SPDIF** - Effects window

**F10/WCLK** - Control window

**READ** - Audio Edit window

**WRITE** - Audio Monitor window

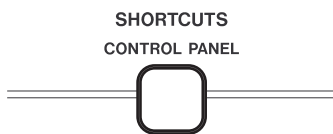
**TCH** - push front window back

**LATCH** - close front window

---

## Opening/Closing the FW-1884 Control Panel

- Press the **CONTROL PANEL** key.



---

## Virtual Key Mappings

You can perform various DP functions using the FW-1884 instead of using a keyboard. There are also equivalents on the FW-1884 for the arrow, Return, Escape, and Page Up/Down keys on the Macintosh keyboard. These can also be used in combination with the modifier keys (**SHIFT**, **CTRL**, and **CMD**). DP provides a Remote Controls dialog which makes it easy to map these key combinations to DP functions that you use frequently.

- **Arrow keys** - same as Macintosh DP cursor key functions.
- **AUX 6/8 (Page Up/Down)**: same as the Macintosh page up/page down keys (scroll windows up/down)
- **AUX 7 (Return)** - same as the Macintosh Return key (accepts dialogs).
- **AUX 5 (Escape)** - same as Mac Esc key (cancels dialogs).

---

## Mixing

---

The faders and other controls on the FW-1884 control 8 DP tracks at a time. You shift the controls to the next or previous tracks by using the **BANK** keys.

---

## Controlling Master Volume

Move the master fader to control the master volume.

# Digital Performer (Macintosh): Aux Busses

## To Change the Master Fader Assignment

- You can switch the master fader assignment to the next or previous virtual master output by holding down the **SHIFT** and **CTRL** key while you press either the **BANK▶** or **◀BANK** key.

While **SHIFT** and **CTRL** are held down, the **BANK** indicators show which virtual master fader is assigned (see “Changing the Master Fader Assignment” on page 5).

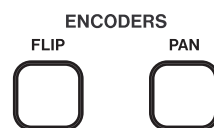
## To Control Track Volume

- Move the track fader to control its volume.
- Hold **CTRL** and press the track **SEL** key to set that track's level to unity.

## To Control Track Pan

- 1 Press the **PAN** key in the **PAN/AUX** key group.
- 2 Move the track encoder to adjust the track's balance left or right.

Hold **CTRL** and turn the encoder to set the track pan to the center.



### NOTE

Hold **SHIFT** for finer adjustment resolution.

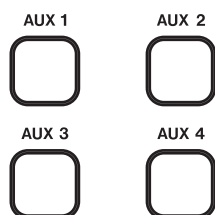
## To Flip Fader and Encoder Control

Press the **FLIP** key. This toggles Flip on/off.

- When Flip is *off*:
  - Faders control track levels.
  - Encoders control track pans.
- When Flip is *on*:
  - Faders control track pans.
  - Encoders control track levels.
- When Flip is on and an **AUX 1-4** key is selected:
  - Faders control **AUX** send levels.
  - Encoders control track levels.

## Aux Busses

You can use the **AUX 1-4** keys on the FW-1884 to control aux send parameters on each track for up to 4 aux busses. Select the **AUX** key (1-4) and then follow the steps below.



## To Control Aux Send Level on a Track

- Move the encoder to change the send level.
- Hold down **SHIFT** down for finer resolution.

## To Mute Aux Send on a Track

- 1 Re-press and hold the active **AUX** key.
- 2 Press the track **MUTE** key to mute or unmute aux send on that track.

## Effects

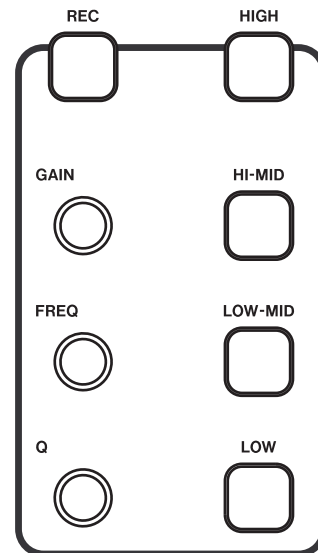
The FW-1884 EQ keys and encoders control a four band EQ when configured in a track effects slot.

### To Configure the Four Band EQ

- 1 Place a four band EQ into Insert A for the desired track.
- 2 Press the track **SEL** and then one of the four **EQ Band** keys to open the EQ window for adjustment:

**HIGH**  
**HI-MID**  
**LO-MID**  
**LOW**

- 3 Use the **GAIN**, **FREQ**, and **Q** knobs to configure the selected band.



Hold **SHIFT** down for finer resolution.

### To adjust other Effect Inserts

- 1 Press **F7**, **F8**, **F9** or **F10** to select Insert B, C, D, or E respectively.
- 2 Use the data wheel to adjust the current parameter.
- 3 Use the **SHTL** key to switch to the next parameter.

### To Bypass an Effect

- 1 Select an Effect.
- 2 Ensure the Effects window is the front window.
- 3 Hold **SHIFT** and **CTRL** and press the **LATCH** key to toggle Bypass on and off.

# Digital Performer (Macintosh): FW-1884 Control Listings

## FW-1884 Control Listings

### Modifier Keys

There are five primary modifier keys on the FW-1884. They are used to provide additional functionality with the FW-1884 control surface keys and knobs. They are also used to send virtual key modifiers to DP in order to access additional features which might normally require a keyboard.

### Surface Keys and Knobs

KEY	ACTION	NOTES
<b>SHIFT</b>	Key & Control Modifier	DP virtual SHIFT Key
<b>CTRL</b>	Key & Control Modifier	DP virtual CTRL Key
<b>CMD</b>	(no surface modifications)	DP virtual Command key
<b>SET</b>	Transport CTRL Modifier	Used when setting values (e.g. marker, punch in/out)

The following table lists the keys and knobs on the FW-1884 and what they are used for. The normal mode of operation (no modifier keys) is indicated with a "-" in the Modifier column.

In some cases what has been silkscreened on the FW-1884 differs from the functionality in DP. For those controls the original silkscreened name appears in parenthesis.

KEY/KNOB	MODIFIER	ACTION
<b>FLIP</b>	-	Toggles Encoder/Fader mapping
<b>PAN</b>	-	ENCODER knob adjusts Track pan
<b>AUX 1-4</b>	-	ENCODER knob adjusts Track Aux send level
	(held down)	MUTE - toggles send mute
<b>CONTROL PANEL</b>	-	Opens the FW-1884 Control Panel
<b>SAVE/F1</b>	-	Save current project
<b>REVERT/F2</b>	-	N/A
<b>ALL SAFE/F3</b>	-	Disable Record on all channels
<b>CLR SOLO/F4</b>	-	Unsolo all tracks
	SHIFT	Unmute all tracks
<b>MARKER/F5</b>	-	Drop Marker at current time ((Also dropped using SET and LOCATE >>))
<b>LOOP/F6</b>	-	Toggles Memory Cycle on/off
<b>CUT</b>	-	Cut the current selection
<b>DELETE</b>	-	Delete current selection
<b>COPY</b>	-	Copy current selection
<b>PASTE</b>	-	Paste previously copied selection
<b>UNDO</b>	-	Undo
	SHIFT	Redo

# Digital Performer (Macintosh): FW-1884 Control Listings

KEY/KNOB	MODIFIER	ACTION
<b>ENCODER KNOB</b>	-	Adjust Track Pan and Sends
<b>SELECT</b>	-	Select track
	WRT	Arm track for automation record
	REC	Arm track for record
	SHIFT	Force fader level to unity
<b>SOLO</b>	-	Solo track
<b>MUTE</b>	-	Mute track
	AUX 1-4	Toggle track Send mute
<b>FADER</b>	-	Adjust Track levels
<b>REWIND</b>	-	Fast Rewind
	SHIFT	Slow Rewind
<b>F FWD</b>	-	Fast Forward
	SHIFT	Slow Forward
<b>STOP</b>	-	Stop Transport
	(when stopped)	Jump to beginning
<b>PLAY</b>	-	Play
	SHIFT	Audible On/Off
<b>RECORD</b>	-	Record
<b>◀ LOCATE</b>	-	Go to previous marker (DP 3.1 and DP4 only)
	SET	Set Marker
<b>LOCATE ▶</b>	-	Go to next marker (DP3.1 and DP4 only)
	SET	Set Marker
<b>IN</b>	SHIFT	Toggle Auto-Punch
	SET	Set Punch In
	SHIFT-SET	Set Memory Cycle In
<b>OUT</b>	SHIFT	Toggle Memory Cycle
	SET	Set Punch Out
	SHIFT-SET	Set Memory Cycle Out
<b>◀ BANK/BANK ▶</b>	-	L/R 8 tracks
	SHIFT	L/R 1 track
	CTRL	Increase/decrease visible banks by 8
	SHIFT-CTRL	L/R 1 virtual master fader
<b>SHTL</b>	-	Toggles data wheel between scrub and shuttle mode
<b>Data wheel</b>	-	Scrub or Shuttle
	SHIFT	Scrub at finer rate
<b>REC</b>	SELECT	Arms selected track for record
	SHIFT	Clear all track record states
<b>READ</b>	-	Toggle Read Automation on selected channels

## Digital Performer (Macintosh): FW-1884 Control Listings

KEY/KNOB	MODIFIER	ACTION
<b>WRT</b>	-	Record Automation Modifier on selected channels
<b>TCH</b>	-	Toggle automation Touch mode on selected channels
<b>LATCH</b>	-	Toggle automation Latch mode on selected channels
<b>Footswitch</b>	-	Record/Stop Toggle

# TASCAM

TEAC Professional Division

# FW-1884

## TEAC CORPORATION

Phone: +81-422-52-5082  
3-7-3, Nakacho, Musashino-shi, Tokyo 180-8550, Japan

[www.tascam.com](http://www.tascam.com)

---

## TEAC AMERICA, INC.

Phone: +1-323-726-0303  
7733 Telegraph Road, Montebello, California 90640

[www.tascam.com](http://www.tascam.com)

---

## TEAC CANADA LTD.

Phone: +1905-890-8008 Facsimile: +1905-890-9888  
5939 Wallace Street, Mississauga, Ontario L4Z 1Z8, Canada

[www.tascam.com](http://www.tascam.com)

---

## TEAC MEXICO, S.A. De C.V

Phone: +52-555-581-5500  
Campeños No. 184, Colonia Granjes Esmeralda, Delegación Iztapalapa CP 09810, Mexico DF

[www.tascam.com](http://www.tascam.com)

---

## TEAC UK LIMITED

Phone: +44-1923-438880  
5 Marlin House, Croxley Business Park, Watford, Hertfordshire. WD1 8TE, U.K.

[www.tascam.co.uk](http://www.tascam.co.uk)

---

## TEAC DEUTSCHLAND GmbH

Phone: +49-611-71580  
Bahnstrasse 12, 65205 Wiesbaden-Erbenheim, Germany

[www.tascam.de](http://www.tascam.de)

---

## TEAC FRANCE S. A.

Phone: +33-1-42-37-01-02  
17 Rue Alexis-de-Tocqueville, CE 005 92182 Antony Cedex, France

[www.tascam.fr](http://www.tascam.fr)

---

## TEAC AUSTRALIA PTY.,LTD. A.B.N. 80 005 408 462

Phone: +61-3-9672-2400 Facsimile: +61-3-9672-2249  
280 William Street, Port Melbourne, Victoria 3000, Australia

[www.tascam.com.au](http://www.tascam.com.au)

---

## TEAC ITALIANA S.p.A.

Phone: +39-02-66010500  
Via C. Cantù 11, 20092 Cinisello Balsamo, Milano, Italy

[www.teac.it](http://www.teac.it)

---